

HDPE Protection Roll or  
Hydro-Ultra Mat G12  
(Spot Weld Seams of HDPE)

Hydro-Prufe 80mil PVC  
Membrane (Loose Laid)

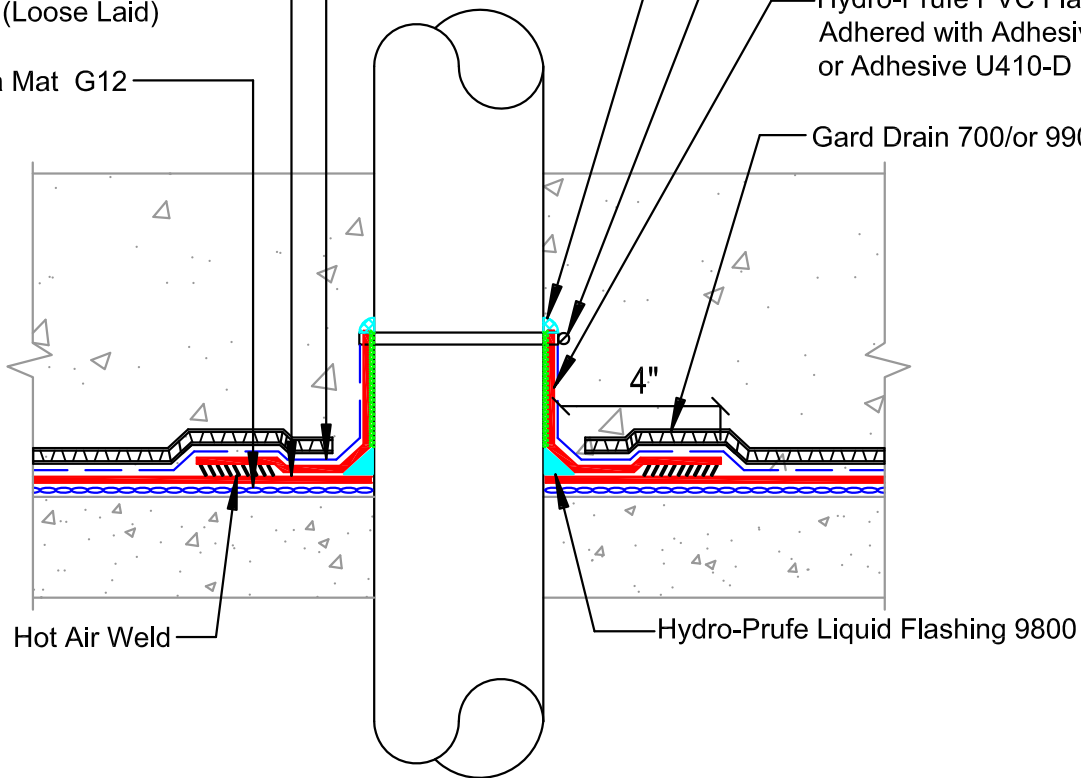
Hydro-Ultra Mat G12

SAF 30 Sealant or HP-9800  
Liquid Flashing

SS Clamping Band

Hydro-Prufe PVC Flashing Sheet  
Adhered with Adhesive U148-A  
or Adhesive U410-D

Gard Drain 700/or 990



Hot Air Weld

4"

Hydro-Prufe Liquid Flashing 9800



DETAIL NAME:

### PIPE PENETRATIONS

(Typical For Above Grade Deck Application)

Scale:

NTS

Date:

10-27-15

Drawing #:

HP-PN-005